



THE MOKI MESSENGER

March-April 2025

San Juan Basin Archaeological Society

sjbas.org

SJBAS Monthly Meeting: March 12

SJBAS meeting – “Adaptive foraging behaviors in the Horn of Africa during the Toba supereruption” by John Kappelman, PhD, Professor Emeritus, University of Texas, Austin. In this presentation Dr. Kappelman follows up last year’s compelling talk about the celebrity bones of Lucy. A reception kicks things off at 6:30 p.m. in the foyer of the Center of Southwest Studies with the zoom presentation starting at 7 PM. Details are on sjbas.org.

President’s Message

Dear Colleagues:

The Good, The Bad and the Ugly.

The year got off to an excellent start with a couple of great programs due to Janices' usual amazing work in recruiting world class speakers. That's the good news.

In bad news, the BLM opted to refuse SJBAS our usual permits to conduct two small group trips to Bears Ears National Monument. This, despite two years of successful applications for Letters of Agreement (LOA) as outlined in their own manual. Previously SJBAS submitted all the paperwork and received a list of trails and sites open to the public and agreed to restrict our low/non impact observational activities to those locations.

To justify their decision, the BLM chose to classify us as a commercial enterprise due to the fact we collect membership dues, despite the fact that said dues have nothing to do with trip

participation, are similar to or less than the other 501(c3) organizations listed in their manual for an LOA instead of the Special Recreational Permit. We have previously provided a simple sources and uses of funds to explain where our dues are spent; speakers, social events, scholarships and service projects. Not one penny is paid to trip coordinators or board members who are all volunteer.

Special Recreational Permits require a burdensome amount of paper work and eligibility criteria that SJBAS simply can not meet. These include certified medical personnel on site, evacuation plans, environmental impact and human waste management plans and an insurance policy listing the BLM as the beneficiary in case they are sued by an injured member. These were designed for large events and commercial guide services.

The ugly aspect is we will have to cancel all SJBAS trips planned trips to BLM managed lands in SE Utah and cease future visits. A subcommittee of your board members are currently working on alternatives and options which will presented to the full board for review. More to follow.

--Paul Landrum

New John W Sanders Intern Works on Field School Collections

This semester's John W. Sanders intern at the Center of Southwest Studies (CSWS) is Lauren Walicki. Lauren is an Anthropology Major in her final semester at Fort Lewis College. For her project, Lauren is working on processing the 2014 Fort Lewis College Summer Field School collections – an exciting change of pace as a collection representing an historical archaeology site!



Directed by Dr. Kelly Jenks (former FLC Anthropology faculty, now at New Mexico State University), this field school was based on the rural community of Los Ojitos in Guadalupe County, New Mexico. According to the [Los Ojitos Project](#) website, “the primary goal of fieldwork at Los Ojitos was to explore the impact of changing land tenure rules on these first-generation Hispanic homesteaders by looking at how their settlement and land-use practices shifted (or didn't) from traditional strategies employed on Spanish land grants.”

So far, Lauren's internship has focused on processing and rehousing the field school's associated archives of site forms, hand-drawn maps, photograph logs, reports, and other field journals or notes from past FLC students. In the next phase of her project, she'll move onto cataloging and rehousing the boxes of collections from the field school. Stay tuned for an update from Lauren in the next edition of the Moki as she works through these collections before graduating in May!

[story submitted by CSWS's Amy Cao]

Trip News

Prof Gulliford to lead John Sanders Memorial Day-Hike and Exploration. Ft Lewis College History Professor Andy Gulliford will lead a hiking tour of a Four Corners historical site. The tour will be March 21-23. The hike is dedicated to the memory of John Sanders, an SJBAS member who led so many insightful hikes over the years. Andy will talk about the history of the site and efforts to stabilize it. This is a unique opportunity for SJBAS members to view a very important site before it disappears to erosion or excavation. The hike is rated easy-active and the group size is limited to 12. Contact Andy at andy@agulliford.com for more information.

Salmon Ruins Retired Director to Lead Hiking Tour of Diné Defensive Sites and Rock Art. The Cost is \$110 payable to Salmon Ruins on day of the trip. It includes guide, transportation from Bloomfield, lunch and water. We have almost filled two vans so please contact the trip leader soon to save a seat. Difficulty: Easy-active. Contact: Hunter at hunter.mccleary@gmail.com

Educational Opportunities on Southwest Archaeology as Compiled by SJBAS Educational Coordinator Betsy Moore

Date	Event
March 3	Archaeology Southwest Café: Sled Dogs in the Southwest: Fact or Fiction? - Presented by Martin H. Welker. Not zoomed but recordings are available here .
March 6	Crow Canyon Archaeological Center: Scarlet Macaws and the Aztatlan Tradition of West Mexico - Presented by Michael Mathiowetz. Register for the zoom here .
March 13	Fort Lewis College: <i>Life Long Learning</i> . Respectful Practice in Archaeological Research - Presented by Charles Riggs. Noble Hall, 7 PM.
March 13	Crow Canyon Archaeological Center: Terry L. Goedel: 9-Time World Hoop Dance Champion. Register for the zoom here .
March 20	Old Pueblo Archaeology Center: Crossing the Akimel to Snaketown: The Ancestral Connection to Modern Day O'Odham - Presented by Reylynne Williams. More information is here . 7-8:30 PM.
March 20	Crow Canyon Archaeological Center: Victory Togetherness: The Struggle for Sovereignty through Basketball - Presented by Tria Blu Wakpa. Register for the zoom here .
March 27	Crow Canyon Archaeological Center: Under-Recognized Food Crops of Southwestern Native American Tribes - Presented by Reagan Wytsalucy. Register for the zoom here .

Date	Event
April 1	Archaeology Southwest Café: Old Dogs, New Tricks: An Overview of Canine Zooarchaeology - Presented by Brandi Bethke. Not zoomed but recordings are available here
April 3	Crow Canyon Archaeological Center: Cooper's Ferry/Nipehe: A Pre-Clovis Site in North America - Presented by Loren Davis. Register for the zoom here .
April 10	Crow Canyon Archaeological Center: Historical and Modern Challenges of Native American Identity Formation - Presented by William Oyenque Carson. Register for the zoom here .
April 17	Fort Lewis College: Life Long Learning. Saving Navajo Weaving: Influence of Navajo Traders in the Evolution of the Navajo Rug - Presented by Jackson Clark. Noble Hall, 7 PM.
April 17	Crow Canyon Archaeological Center: Powerful Pigment: Unearthing the Enigmatic Fremont Red-on-Gray Pottery - Presented by Scott Ure. Register for the zoom here .
April 23-27	Society for American Archaeology: Annual Conference in Denver, CO. Information at https://www.saa.org/annual-meeting
May 1	Crow Canyon Archaeological Center: Nuwu Astronomical Views - Presented by Autumn Gillard. Register for the zoom here .
May 7 - Aug 13	Old Pueblo Archaeology Center: Online Course - The Mogollon Culture of the US Southwest - Presented by Allen Dart. Information at Old Pueblo at 520-798-1201 or info@oldpueblo.org
May 8	Crow Canyon Archaeological Center: Archaeology, Indigenous Knowledge, and Restorative Justice in Canada - Presented by Kisha Supernant. Register for the zoom here .

Upcoming SJBAS Events for 2025

[Contact trip organizers for details.
See sjbas.org for the latest version of the full-year calendar.
Dates and event descriptions may change]

March 12	SJBAS Meeting – “Adaptive foraging behaviors in the Horn of Africa during the Toba supereruption” by John Kappelman, University of Texas, Austin, retired.
March 21-23	John Sanders Memorial Day-Hike & Exploration –Difficulty: Active-Easy. Contact: Andrew Gulliford at andy@agulliford.com . Sign ups begins Feb. 1st.
April 9	SJBAS Meeting – “Faux Native American Picture-Writing in Colorado and the American West” by Leigh Marymor, Museum of Northern Arizona.
April 11	Guided Daytrip to see Diné Defensive Sites and Rock Art. Cost: \$110 payable to Salmon Ruins day of the outing. Includes guide, transportation

	from Bloomfield, lunch, water. <i>Minimum</i> signup: six. Difficulty: Easy-active. Several more spaces are available. Contact: hunter.mccleary@gmail.com
April-May TBA	Hovenweep Outliers Day-trip. Cutthroat Castle, Painted Hand, Holly Tower. We will compare and contrast siting, masonry, function, and occupation periods as each is different. Difficulty: Moderate. Contact: Andy Dennison at andrewdennison86@gmail.com
April-May TBA	Mitchel Springs — Possible two-day trip. Difficulty: Easy-Active. Contact: Tom Polich at thomas.polich@gmail.com .
April-May TBA	Jackson Castle Day-Hike. One-mile hike to pueblo with a dozen kivas and long walls. Difficulty: Moderate. Contact Andy Dennison at andrewdennison86@gmail.com .
May 14	SJBAS Meeting – “Turquoise Trade in the Chacoan World and Beyond” by Sharon Hull, Chaco Culture National Historical Park. 7 PM
May 24	Sand Canyon and Goodman Point Pueblos – Day trip to two Pueblo III villages in Canyons of the Ancients. Difficulty: Easy. Contact Rusty Chamberlain at chambrke@aol.com . Sign-up begins April 1st.
June	No monthly meeting
June 11	SJBAS Annual Picnic — Junction Creek Group Campground
June 23-25	Ohkay Owingeh Festival. The festival is June 24 but before and after this date we enjoy other sites in the Santa Fe/Espanola area. Easy. Contact Rusty Chamberlain at chambrke@aol.com . Sign-up begins April 1st.

In Passing

Dr. Ernie Cotton, President of SJBAS from 1994-1996. Ernie died on February 6 at age 97. Ernie taught, researched, and practiced medicine the University of Colorado Medical School from 1958-1988. He played a key role in founding the discipline of pediatric pulmonology. His approach to research, education, care and advocacy in that field was the catalyst for today’s Section of Pulmonology and Sleep Medicine at Children’s Hospital Colorado. He married his second wife, Margo Ann, in 1984. In 1988 they retired to Durango where Ernie and Margo enjoyed skiing, hiking, camping, cycling, snowshoeing, and going on archaeology field trips. –*Janice Sheftel*

Eliane A. Mueller Trapp Viner died in Medford, Oregon in December, 2024. She had moved from Durango to Medford after the death of her husband John Viner be closer to her son. Eliane was born in a small farming village in Alsace, France. She emigrated to the US in 1954, earned her nursing degree in Washington, DC in 1963 and became a US citizen in 1967. While in nursing school she met John. In 2001, she and John moved from suburban Maryland to Durango. They immersed themselves in nature, sociology, geology, history, and archaeology. They volunteered for the BLM as stewards of sites of archaeological significance and for the National Park Service as historical interpreters at Mesa Verde. Eliane organized the food for the SJBAS pre-meeting socials. –*Janice Sheftel*

Former Fort Lewis College Archaeology Professor Jim Judge died in December, 2024. He is remembered for his research at Chaco Culture National Historical Park, as Chief Research Archaeologist, and then Director of the Chaco Project. He authored more than 50 books and chaired the National Park Service’s National Coalition for Applied Preservation Technology. Judge helped bring the discipline of Archaeology into the 21st century. He devised models for a more efficient surveying process, which reduced surveying by predicting the layouts of houses and other structures before they were excavated. He examined how Chaco populations changed through time to end up with its incredible, complex buildings. Judge also studied the impact of climate change and drought and how they might explain why these ancient populations “disappeared” from the region. Judge also studied the network of roads linking major Chacoan pueblos with remote outlier settlements. *–Janice Sheftel*

Additional SJBAS Volunteer Opportunities

Program Co-Chair: We are looking for a volunteer to work with our Program Chair, Janice Sheftel. The Program Chair secures speakers for regular membership meetings and works with other SJBAS members to organize other lectures, such as the John W. Sanders Lecture. This is a Board position. Please contact Janice at janicesheftel@gmail.com for more information.

Membership Co-Chair: The co-chair will work with Tish Varney and, eventually, move into the chair position. The Membership Chair is responsible for organizing recruitment of new SJBAS members and supporting Board members in encouraging active participation by members. This is a Board position. Please contact Tish Varney (tishvarney@att.net) for more information.

Webmaster Assistant: If you know your way around a computer, please consider volunteering to assist our Webmaster, Lyle Hancock, when he is unable to access a computer. The Webmaster is responsible for maintaining and updating the SJBAS website- www.sjbas.org. Please contact Lyle for more information, lylehancock54@gmail.com. Training and support will be provided for all positions.

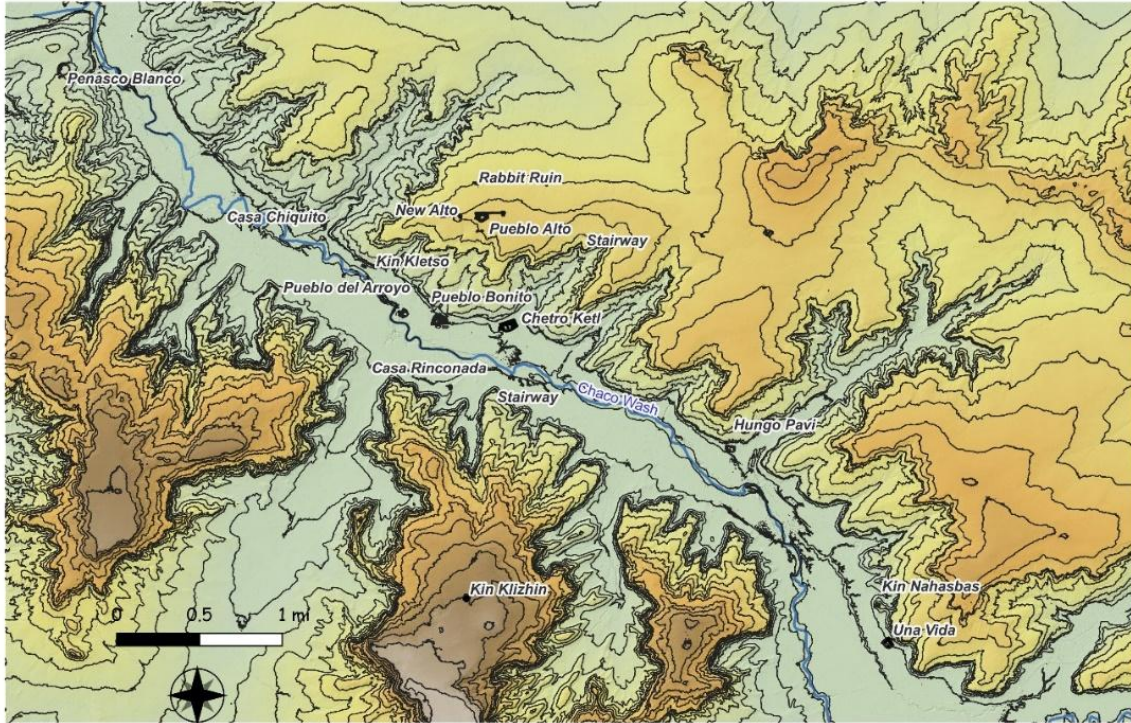
SJBAS Elected Officers and Board Members

President	Paul Landrum
Vice President	Thomas Polich
Secretary	Susan Hicks
Treasurer	Mary Moorehead

Communications chair	Byron Kellogg
Membership chair	Tish Varney
Field Trip Program coordinator	Rusty Chamberlain
Education/PAAC representative	Betsy Moore
<i>Moki Messenger</i> editor	Hunter McCleary
Programming chair	Janice Sheftel
Publicity chair	Rusty Chamberlain
Social chair	Tammie and Joel Barger
Webmaster	Lyle Hancock

SJBAS Membership renewals are due by January 31st each year. Individual dues drop to \$15 after June 30. If you need to renew a lapsed membership or join SJBAS, please complete the [SJBAS Annual Membership Form](#), make your check for \$25 (\$50 family, \$10 student) payable to 'SJBAS' and mail with the Annual Membership Form only to: SJBAS, Attn: Treasurer, P.O. Box 3153, Durango, CO 81302.

Chaco Canyon New Mexico



Dorshow, W. (2019). 3D Landscape Reconstruction and Land Use Modeling, Chaco Canyon, NM 2016. National Center for Airborne Laser Mapping (NCALM). Distributed by OpenTopography. <https://doi.org/10.5069/G9XG9P8D>. Accessed: 2025-02-03

How many of these sites have you visited?

[Submitted by Scott Andre]